

**Parish:** Brackenborough with Little Grimsby, Elkington, Fotherby,  
Louth, Welton le Wold  
**Title:** Land at North and South Elkington  
**Reference number:** CA/7/1/214

**DEPOSIT OF MAP AND STATEMENT UNDER SECTION 31(6) OF THE HIGHWAYS  
ACT 1980**

**Details about the Deposit**

**Landowner's name:** Mr C Dobson  
**Landowner's address:** Estate Office, South Elkington, Louth, Lincs LN11 0RY  
**Date of deposit of the map and statement:** 14 February 2005  
**Date on which the map and statement expires:** 13 February 2015

**Geographic Location**

**Grid Reference:** TF 303 891

**Address(es) and postcode of any buildings on the land:** The Beeches High Street South Elkington LN11 0RY, 1 Farm Cottages High Street South Elkington LN11 0RY, 2 Farm Cottages High Street South Elkington LN11 0RY, 3 Farm Cottages High Street South Elkington LN11 0RY, The White Lodge High Street South Elkington LN11 0RY, The Mews High Street South Elkington LN11 0RY, The Lodge High Street South Elkington LN11 0RY, Corner Bungalow High Street South Elkington LN11 0RZ, Manwood High Street South Elkington LN11 0RZ, Newhaven High Street South Elkington LN11 0RZ, 10 High Street South Elkington LN11 0RZ, The Hollies High Street South Elkington LN11 0RZ, Ivy Cottage High Street South Elkington LN11 0RZ, Post Office High Street South Elkington LN11 0RZ, The Forge High Street South Elkington LN11 0RZ, Hillside High Street South Elkington LN11 0RZ, Little Lyndon High Street South Elkington LN11 0RZ, Meadow Cottage Church Lane South Elkington LN11 0SA, 1 Glebe Cottages Church Lane South Elkington LN11 0SA, 2 Glebe Cottages Church Lane South Elkington LN11 0SA, Brooms Church Lane South Elkington LN11 0SA, Two Yews Church Lane South Elkington LN11 0SA, Crown Tree House Church Lane South Elkington LN11 0SA, School cottage Church Lane South Elkington LN11 0SA, Hall Church Lane South Elkington LN11 0SA, Woodlands Church Lane South Elkington LN11 0SA, Field Fare Church Lane South Elkington LN11 0SA, Sherwood House Church Lane South Elkington LN11 0SA, Park House Church Lane South Elkington LN11 0SA, Chobe Church Lane South Elkington LN11 0SA, Rose Cottage Church Lane South Elkington LN11 0SA, Church Farm Church Lane South Elkington LN11 0SA, 1 Church Farm Cottages Church Lane South Elkington LN11 0SA, 2 Church Farm Cottages Church Lane South Elkington LN11 0SA,

Grazely South Elkington LN11 0SA, Welton Springs Hatchery South Elkington LN11 0QS, Spring Lodge Welton le Wold LN11 0QS, Welton Springs Welton le Wold LN11 0QS, Vale End Welton le Wold LN11 0QS, Bunkers Farm Welton le Wold LN11 0QS, 1 Bunkers Farm Cottages Welton le Wold LN11 0QS, 2 Bunkers Farm Cottages Welton le Wold LN11 0QS, Dunnock House Welton le Wold LN11 0QT, Springhead Welton le Wold LN11 0QT, The Manor North Elkington LN11 0SE, Manor Farm North Elkington LN11 0SE, Acthorpe Farm South Elkington LN11 0SD, Acthorpe House South Elkington LN11 0SD, The Cottage South Elkington LN11 0SD, Lynfield House South Elkington LN11 0RU, Acthorpe Top South Elkington LN11 0RX, Thorpe House South Elkington LN11 0SB, Thorpe Farm South Elkington LN11 0SB, Brickyard Cottages South Elkington LN11 0RU, Sheepfold South Elkington LN11 0QS, Four Trees South Elkington LN11 0RU, Lings Hill South Elkington LN11 0RU, The Woodloes South Elkington LN11 0RU, Tudor Gate South Elkington LN11 0RU, Cuckmere South Elkington LN11 0RU, Woodrow Cottage South Elkington LN11 0RU, Silvadale South Elkington LN11 0RU, Kilmelford South Elkington LN11 0RU, Kyname South Elkington LN11 0RU, The Towers South Elkington LN11 0RU, Longroyd South Elkington LN11 0RU, Merdel South Elkington LN11 0RU, Hilcot South Elkington LN11 0RU, Oak Lodge South Elkington LN11 0RU, Beech Wood South Elkington LN11 0RU, Ranworth South Elkington LN11 0QR, Westwood South Elkington LN11 0QR, The Pastures South Elkington LN11 0QR, Avalon South Elkington LN11 0QR, Wolds End South Elkington LN11 0QR, Jardia South Elkington LN11 0RY, Ridgeway South Elkington LN11 0RY, Church Top Farm South Elkington LN11 0SE, Church Top Cottage South Elkington LN11 0SE, Acthorpe Cottage South Elkington LN11 0RU

**Postcodes covering the area land:** LN11 0, LN11 9

**Principal city or town nearest to land:** Louth

**Parish:** Brackenborough with Little Grm, Elkington, Fotherby, Louth, Welton le Wold

**Electoral Division:** Louth North, Louth Wolds

**District:** East Lindsey

**DEPOSIT OF A STATUTORY DECLARATION UNDER SECTION 31(6) OF THE  
HIGHWAYS ACT 1980**

**Landowner's name:**

**Landowner's address:**

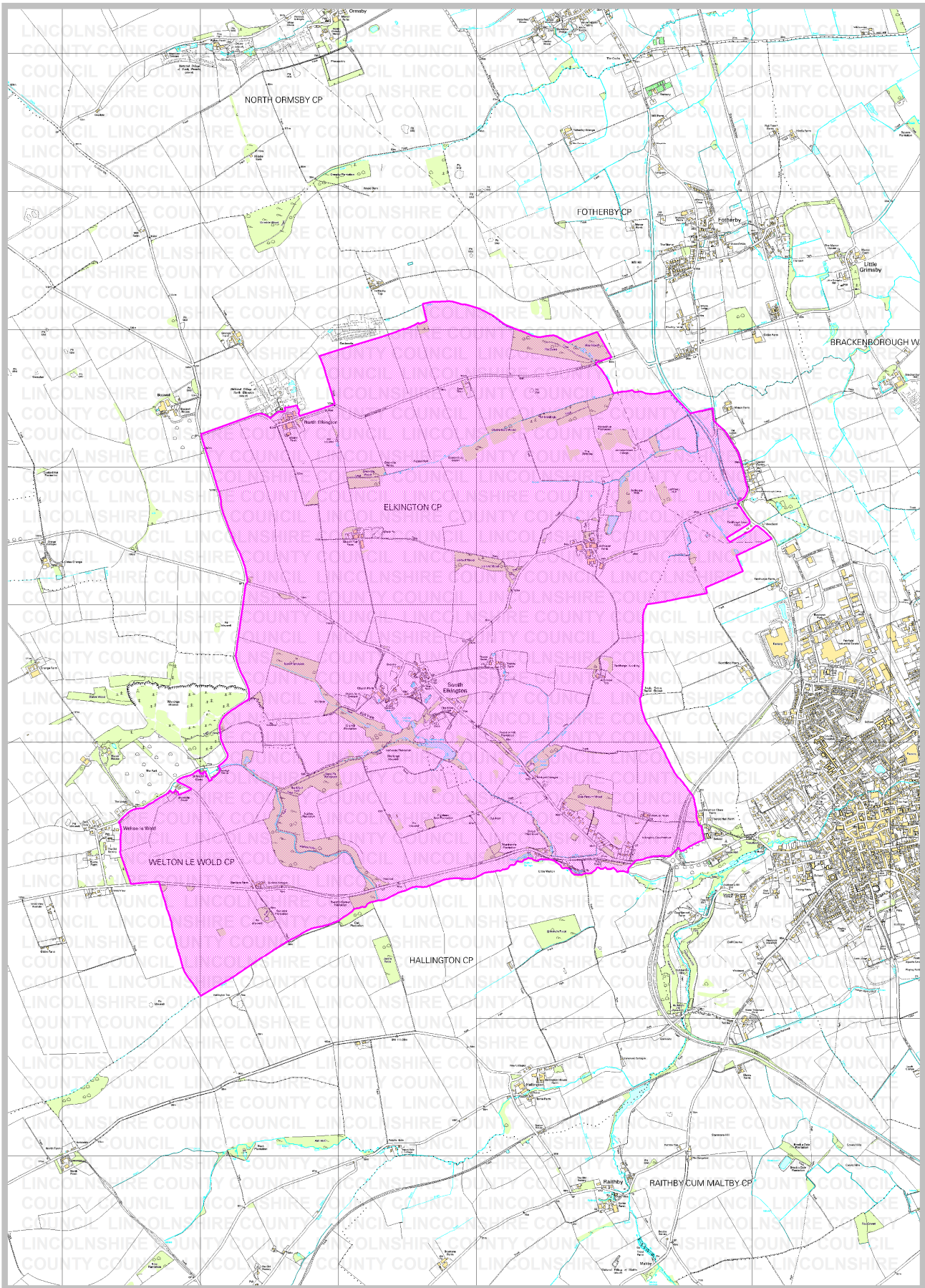
**Date on which the  
Statutory Declaration  
expires:**

## **COUNTY COUNCIL'S CONTACT DETAILS**

**Section:** Public Rights of Way and Countryside Access Section  
**Department:** Development Directorate  
**Address:** Lincolnshire County Council, 4<sup>th</sup> Floor, City Hall, LINCOLN LN1 1DN  
**Telephone:** 01522 782070  
**E-mail:** countryside\_access@lincolnshire.gov.uk

## **ELECTRONIC REGISTER**

Government legislation requires that details of maps and statements and Statutory Declarations deposited with Lincolnshire County Council under Section 31(6) of the Highways Act 1980 be made available for viewing by the public on the authority's website. This Register will be updated with any new deposits lodged with the County Council. The Register is also available to be viewed in hard copy format together with the actual documents at City Hall. If you have any queries about this register or the details contained in it, please telephone 01522 782070.



Rights of Way & Countryside Access  
Director of Development: RA Wills  
City Hall, Orchard Street,  
Lincoln LN1 1DN

**Title: Land at North and South  
Elkington**  
Ref: CA/711/214  
Grid Ref: TF 303 891  
Scale: approx. 1:25000

**Key:**  
Land covered by a deposit made  
under Section 31(6) of the  
Highways Act 1980

