



# Grantham Transport Strategy

December 2022

Summary document



# Grantham Transport Strategy

## Foreword

“With the A1 to the west, and the East Coast Main Line and River Witham passing through its centre, Grantham is one of Lincolnshire’s most important market towns. We’re currently more than halfway finished building the new Grantham Southern Relief Road, and we want to be ready for making even more improvements that help make getting around town quicker and easier for people now and in the future. And this strategy will help achieve just that.

During its development, we listened to the views of residents, businesses, schools and other important local groups and organisations because the new Grantham Transport Strategy will affect every single person that lives, works and learns in town. Due to coronavirus, we’ve seen significant changes to the working patterns and travel habits of people throughout the county, so have factored these, and other changing travel demands, into our strategy.

And by offering a wider range of affordable, reliable and environmentally-friendly travel options for people to choose from, we hope to encourage more people to use alternative forms of transport, resulting in less congestion and a more pleasant town centre. In the end, we want to make Grantham a more prosperous, attractive and healthier place to live, learn, work and visit – all while supporting planned economic growth for the area. Within this document, you’ll find a number of proposals for us, the district council and developers to consider over the next fifteen years.

Some of our top priorities are to: complete the Grantham Southern Relief Road; make the town centre a more pleasant and safer place; improve facilities for walking and cycling; and investigate junction improvements at key pinch-points. Doing this will help cut congestion, open up new development land and meet changing travel demands. Combined with other measures, like improving bus and rail services, the strategy aims to ensure Grantham has the infrastructure it needs to meet travel demands over the coming decades.

The challenge now is finding the funding needed to make these improvements a reality. And the only way we’re going to be able to do that is if everyone gets behind the plan and works together.”



### **Cllr Richard Davies**

Executive Member for Highways and Transport at Lincolnshire County Council



### Overview

The Grantham Transport Strategy has been developed by Lincolnshire County Council and also provides a clear place-based vision for the future of transport and travel in and around Grantham up to 2036.

The transport strategy seeks to improve travel choices and the transport network for people living, working, and visiting Grantham. It aims to tackle congestion, deliver more sustainable and low carbon travel options, and help the town grow, adapt and be resilient to wider challenges and opportunities over the next 10 to 15 years.

The aspiration is to deliver improvements which will make travelling around Grantham more convenient, reliable, easier, and greener. Transport and mobility considerations play a key place enhancing role in the communities by improving access to employment, education, leisure, and recreation activities.

The strategy's proposals are designed to provide an inclusive, future ready transport network which facilitates access to opportunities and services and provide the infrastructure that helps to protect the environment and improve the health and wellbeing of those in Grantham.

### What is the purpose of this strategy?

The purpose of the strategy is to provide the framework for improving the travel choices and everyday journeys for people living, working, and visiting Grantham in the short, medium, and longer term.

Whilst taking full account of the Lincolnshire County Council Corporate Plan, Green Masterplan and Local Transport Plan 5, the strategy will also have a significant role to play in helping to address a range of strategic challenges that will affect Grantham over the coming years.

It identifies schemes and interventions which aim to support a low carbon recovery from the effects of the COVID-19 pandemic and to allow for sustainable growth of the town and its economy.

There are a range of challenges that the transport strategy will help the town and the surrounding area to meet, including:

- Significant environmental challenges resulting from transport and travel and the transition to low carbon travel. This includes town centre air quality, protecting the town's historic nature and green spaces and seeking to tackle climate change by using more sustainable forms of travel and transitioning to low emission vehicles
- Supporting the recovery and growth of Grantham's key economic sectors by improving the reliability and the resilience of the strategic highway network
- Supporting the sustainable roll out of planned housing, employment, and retail development
- The need to provide a connected and reliable transport network which serves both the urban centre and more rural areas
- The need for travel choice and flexibility across different and changing travel demands and patterns, including how people access different activities such as employment, education, healthcare, retail, leisure, and tourism

## Vision and objectives



### Vision

By 2036, Grantham town centre will have a strong retail, cultural and service offer alongside historic spaces and an attractive riverside which are interconnected via active travel routes. Opportunities for employment will result from the regenerated town centre which will help to retain local skills and boost economic growth. Improved transport links will support employment of local residents, with public transport serving rural settlements on a frequent basis, in addition to walking and cycling networks to improve access. Bus and train are the preferred mode of transport for longer distance journeys and private motorised vehicles are kept to a minimum for travel in the town centre, helping to protect and enhance the historic nature of the environment.

The population of Grantham will have grown through the ambitious but managed delivery of new housing and employment, including the delivery of the Sustainable Urban Extensions that will be an example of how the movement of people can have sustainable travel at its core. Growth will be supported by strong digital connectivity, extensive walking and cycling networks, a fast and reliable passenger transport service and local facilities and services to support more sustainable travel choices and reduce urban traffic.

Grantham continues to be an important strategic gateway. Improved rail travel has enhanced its regional connectivity. International assets such as East Midlands and Doncaster Airport are also easily reachable, and the Future High Street Fund investment has transformed the station approach at Grantham railway station and revitalised the setting to ensure visitors are met with a vibrant town centre. Its position in respect of the major road network continues to play an important role in the local economy. The A1 and A52 places Grantham in the midst of major destinations. In 2036, the major road network will be equipped with electric vehicle infrastructure and innovative technology that continues to enable and support these journeys.

In line with national policy, the transition to low carbon transport will continue to accelerate. In 2036, private motorised vehicles will no longer dominate our town centre streets and Grantham will have become a more 'people friendly' place – making the most efficient use of existing urban spaces. With the 2030 ban on new petrol and diesel vehicles in place, the electric and alternative fuel infrastructure will support the transition to low emission vehicles and form a key ongoing workstream. Ultimately, the investment in transport will have resulted in a much more resilient network supporting a significant shift towards net zero carbon and helping to improve the quality of life of residents whilst facilitating sustainable economic growth.



## Objectives

Objective theme	Objective
<b>Sustainable economy</b>	Strengthen Grantham's position as a strategic gateway by improving network resilience along the A1 to support sustainable economic growth.
<b>COVID-19 recovery</b>	Support business and resident recovery following the COVID-19 pandemic through an inclusive, connected, accessible and future ready transport network.
<b>New development delivery</b>	To support the sustainable delivery of new housing and employment sites, including the Sustainable Urban Extensions, facilitating digital and sustainable transport infrastructure within new developments, and connecting to and from the wider area.
<b>Environmental resilience</b>	To support the Green Masterplan and net zero 2050 and the transition to a decarbonised transport network to help mitigate the impact of climate change.
<b>Accessibility, inclusivity, and integration</b>	To increase the accessibility of Grantham's town centre by inclusive and integrated transport options improving linkages with the surrounding towns and villages.
<b>Future mobility ready</b>	To ensure Grantham is future mobility ready, facilitating the use of electric, shared, connected, alternative fuelled and automated transport as well as the business models that support them.
<b>Health and wellbeing</b>	To enhance the health and wellbeing of Grantham's communities through improved air quality, reduced noise levels, increased physical activity and safety.
<b>Active travel, natural environment and open space</b>	To reduce congestion and promote health benefits by promoting walking and cycling within Grantham as a viable option and natural choice for short trips, including access to open space.
<b>Protecting and celebrating heritage</b>	To protect and enhance the historic and cultural environment of Grantham, including supporting an improved public realm.
<b>Thriving high street</b>	To connect residents and visitors with the town centre using sustainable modes whilst also ensuring the efficient use of existing infrastructure and facilities for essential vehicle travel, in recognition that increased footfall and dwell times support the economic vitality of the town centre.
<b>Travel choice and access to services</b>	Provide Grantham's communities with the ability to work, learn, manage healthcare, shop, and socialise through digital connectivity and an improved range of viable travel options.
<b>Journey reliability</b>	To improve journey reliability for all trip purposes and modes, including travel time and punctuality.



### Delivering a comprehensive strategy for accessibility

Accessibility for all is at the heart of Grantham Transport Strategy. Residents, businesses, and visitors need a real choice in terms of transport options to access employment, education, leisure, and recreation – ultimately for equality of opportunity. This is vitally important in a place where density in population varies substantially from an urban centre to rural outlying communities.

As well as choice, transport service provision needs to be affordable and reliable. Infrastructure needs to be coherent, easily navigable, well-maintained and safe, as well as helping people to access the everyday services and amenities that they need.

The strategy needs to cover all types of journeys that we make and the links between the different travel modes we may use – everything from walking, cycling and public transport to local and long-distance trips, as well as the role of digital. It needs to consider how we can best make those journeys and ensure that the options are available for people to make more sustainable choices.

The strategy also needs to consider how it can support Grantham’s growth ambitions including the Sustainable Urban Extensions, support the development of a vibrant people centric town centre and support the transition to a net zero carbon.

### Delivering for the current and future population

The transport strategy needs to provide a future-ready transport network for the population of Grantham that addresses the current challenges and provides for the medium and longer-term needs of the town.

The transport strategy period will see continued societal and technological changes that will affect movement and travel locally and nationally. This will result in the needs of the resident community changing and it will be important for the transport network to be able to provide for these changes, particularly as the population grows and the average age increases.

The delivery of the Sustainable Urban Extension provides a significant opportunity to boost the local economy. This is likely to bring in more families to the town and increase the proportion of residents of working age. The transport strategy must provide the framework for this to happen sustainably, implementing measures early and placing sustainable infrastructure at its core and with measures to promote low carbon journeys embedded within it.

### Need for change and defining the priorities

The identification of issues and opportunities for transport in Grantham has been established through engagement and as part of the strategy process. The need for change to deliver a sustainable, reliable, low carbon transport network and improved travel choices is clear.

The transport strategy identifies schemes and initiatives which seek to address the challenges and support Grantham’s continued growth and development. In order to generate options that meet the need for change and follow our vision and objectives, four priority areas have been defined. These help to develop and shape options which meet the needs for change and align with Grantham’s transport priorities.



### **Influencing travel behaviour**

*Helping to provide greater choice in meeting daily activities from home without the need to travel (e.g., hybrid / home-working). When people do need to make journeys, influencing where these are from and to, so that distance travelled is reduced.*



### **Prioritising active modes**

*Making cycling and walking the preferred options for shorter journeys by considerably improving infrastructure.*



### **Promote shared and public transport**

*Encouraging existing and new forms of public and shared transport for longer distance journeys by providing priority measures and increasing frequency and level of service.*



### **Mitigate residual impacts of traffic**

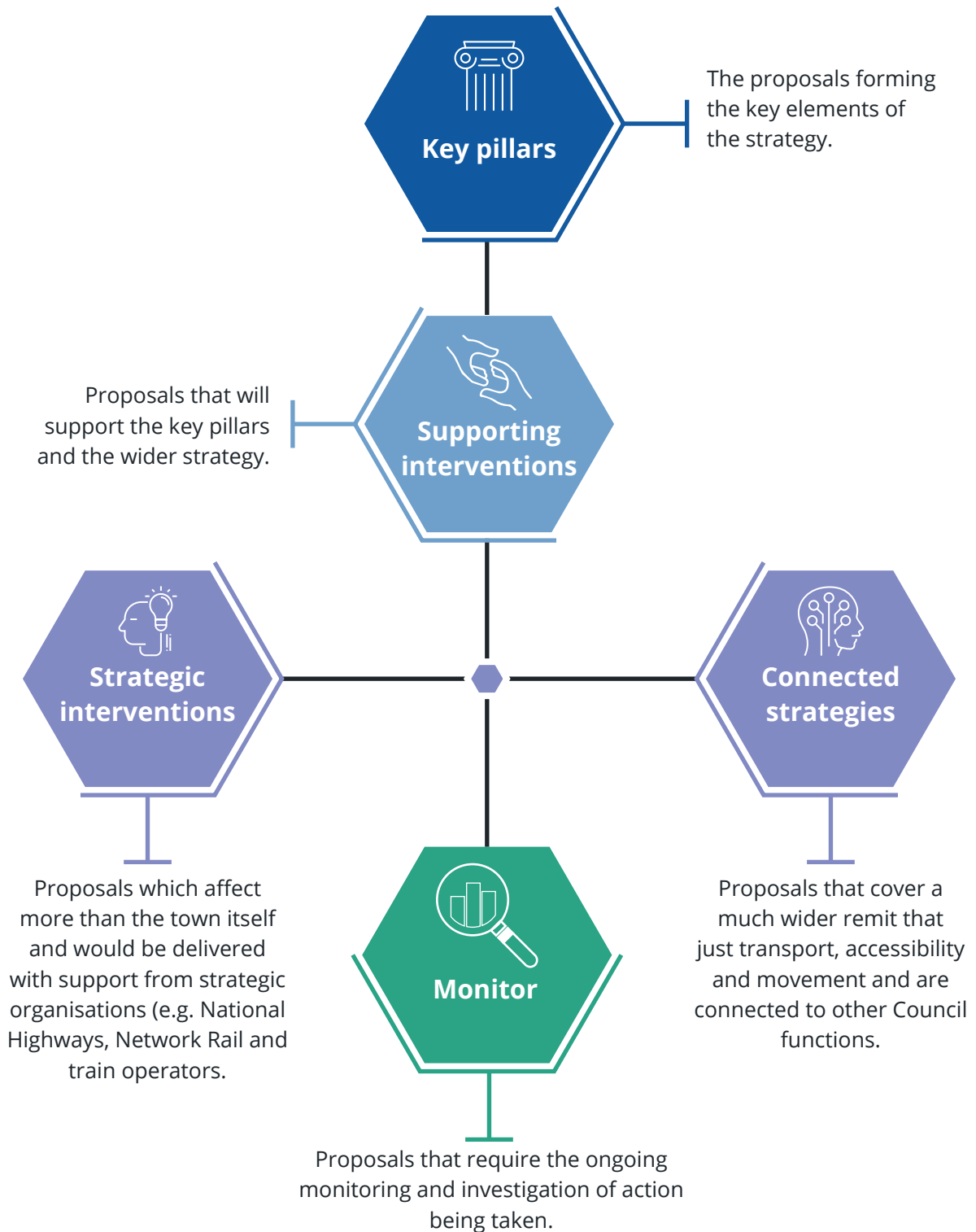
*Where there is no realistic alternative, longer journeys will still need to be made car. Where this is the case, the impact of the resulting traffic and pollution will be mitigated.*



# The strategy



The transport strategy and the proposals identified are structured under a number of different themes that, when brought together, will help to deliver the strategy's aims:





# Pillars of the strategy



The key pillars of the strategy are the interventions which will form the priority infrastructure, service, and policy interventions. These will provide the key plans to support the delivery of the vision and objectives.



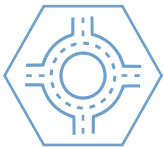
## **Mobility hubs**

Bringing together transport and supporting facilities to make travel easier through the town's transport interchanges including Grantham rail station and creating new mobility hubs in the town centre and in the proposed sustainable urban extensions



## **Grantham cycling and walking network plan**

Investing in high-quality walking and cycling infrastructure along key corridors which are connected to where people want to go, are safe and are easily navigable



## **Sustainable Urban Extensions (SUE) package**

SUE healthy neighbourhoods to include bus connectivity, crossings and improvements to the cycling and walking environment. It will provide connections to the existing and proposed cycling and walking networks at Spitalgate Heath and Rectory Farm



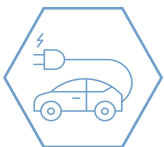
## **Public realm improvements package**

Public realm improvements throughout Grantham town centre to promote movement and create the spaces people want



## **Active travel infrastructure package**

Helping people to make walking and cycling journeys through improved wayfinding and cycle parking in and around Grantham



## **Electric vehicles package**

Decarbonising travel and transport is key to tackling climate change. The transition to electric vehicles is gathering pace and the strategy aims to support this



## **Local bus service enhancements package**

Enhancing the bus network in Grantham through increasing the frequency, operating hours, route coverage and reliability of bus services. Delivering new or improved services to the new sustainable urban extensions, the surrounding villages and synchronising services with rail services



## **Junction improvements package**

Targeted capacity and safety improvements such as Gainsborough Corner, Barrowby Road/ Gloucester Road and several junctions in the town centre



### **Traffic operations and liveable streets**

A package of measures throughout Grantham to manage the impact of traffic through planned routing, traffic calming, modal filters, and other restrictions such as traffic regulation orders and HGV bans



### **A52 green corridor**

Creation of a high-quality green corridor along Barrowby Road and Somerby Hill which would include improvements to public transport and enhanced walking and cycling infrastructure



### **Bus priority package**

Making bus journeys quicker and more reliable and exploring options for bus priority on Barrowby Road, Somerby Hill, High Street A607, B1174 and Dysart Road

## **Strategic, connected and monitoring proposals**



## **Strategic interventions**

The strategic interventions of the strategy are the interventions that will require work across a range of local authority departments, including partnership with external organisations.



### **Green corridors**

Develop a network of 'Green Corridors' throughout Grantham to promote sustainable travel and connectivity to Grantham town centre



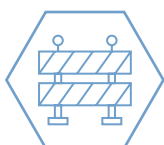
### **Increased cycle spaces on trains**

Working with partners to enable sustainable first and last mile journeys through increasing the space available on trains for transporting cycles



### **Rail service improvements package**

Working in partnership with the rail industry to deliver better services we will aim to improve the frequency and quality of services to Grantham rail station



### **Review parking tariffs at the railway station**

Working in partnership with the rail industry to review the parking tariffs at Grantham rail station to support use of rail

## Connected strategies

The connected strategies are elements within the transport strategy which do not necessarily only cover traditional forms of transport or which have a much wider remit and often have a role to play in influencing travel behaviour and movement. These interventions will need to be delivered through partnerships across local authority departments and boundaries.



### Land-use package

Putting accessibility at the heart of land use planning through integrating sustainable transport decision making and land use policy, particularly for the sustainable urban extensions at Barrowby Road and Somerby Hill



### Digital package

Enabling people to access work and services differently through working with partners to improve digital access



### Rural community strategy

To improve accessibility to services and improve walking and cycling infrastructure in the Greater Grantham area and satellite villages



### Street design package

Updates to the existing street design guide to align with local transport note 1/20



### Air quality package

Developing a strategy to provide the infrastructure and measures to manage and improve air quality in Grantham



### Tourism package

A package of measures to grow and promote the visitor economy in Grantham and the surrounding area



### Smart ticketing and payments

Making ticketing and payments systems smarter for users of public transport in Grantham



### Coach parking

The provision of designated coach parking and pick up / drop off locations in Grantham town centre which are aligned with the potential mobility hub sites

## Monitor and investigate

The monitor and investigate interventions in the strategy are those that are likely to fall beyond the Local Plan period (beyond 2036) and/or require further work and investigation as they are based on emerging and evolving technology.



### Autonomous travel strategy

Over the course of the strategy period, evolving technologies will be monitored to ensure that the strategy remains up to date, reflects these changes and that the right action is taken to ensure Grantham can take advantage of the potential opportunities



### Autonomous deliveries

Urban freight delivery methods are rapidly changing and there is forecast for growth in the provision of autonomous / remote-controlled robots for goods delivery. The transport strategy will monitor the progression of this technology to understand any issues or opportunities



### Personal autonomous vehicle solution

Technology is rapidly evolving, and personal autonomous vehicles are in development. The transport strategy will monitor the progression of this technology to understand the issues and opportunities



### Smart sensors

Using real time information to monitor and track changes to the transport network in Grantham



### Smart travel portal

Enhancing the Travel Portal website

## Supporting interventions



The supporting interventions are those that will support the Key Pillar interventions in the delivery of the strategy's vision and objectives.



### 30-minute neighbourhoods strategy

To improve accessibility to services by ensuring that the people of Grantham can access services, retail, amenities and key locations within 30 minutes by bus, walking and cycling



### Behaviour change package

Provide training and education opportunities on improving safety for cyclists, promoting the health benefits of active travel and promoting low carbon travel



### **Low traffic neighbourhoods and Homezoning**

Exploring opportunities to make residential streets low traffic neighbourhoods and prevent rat running



### **Transport engagement package**

Keeping the transport conversation going through the Grantham Transport Strategy Board and engaging with stakeholders and the public to steer the delivery of the strategy



### **CallConnect enhancements package**

Increasing the hours of operation and number of CallConnect vehicles operating across Grantham



### **Sharing package**

Making more transport accessible without the need to own through cycle and e-cargo bike hire, electric vehicle car clubs and community transport



### **Rail station / town centre connectivity package**

A package of measures to enhance the active travel connections between Grantham rail station and the town centre



### **Local bus infrastructure package**

Upgrading the quality and accessibility of buses, improving local bus stops and providing enhanced facilities and converting bus fleets to low emission or electric vehicles



### **Freight package**

Reducing the impact of freight in Grantham with the establishment of a Freight Quality Partnership and exploring options for the implementation of first-last mile goods delivery infrastructure



### **Equestrian routes strategy**

Promoting safe, comfortable and convenient travel by horse in and around Grantham



### **Parking package**

Supporting the strategy and the wider parking offer through improvements and consolidation of car parking supply, payments systems, residents parking zones, route signing, electric charging facilities and links to the proposed mobility hubs



### **Taxi licensing policy**

Review of taxi licensing policy to support the uptake of low emission vehicles



### **Bus affordability package**

Making ticketing and payment systems smarter for users of all public transport in Grantham



### **Travel planning package**

Working with residents and employees across Grantham to encourage more sustainable choices through rolling out bikeability training, greater use of travel plans and personalised travel planning



### **Network improvements package**

Optimising traffic flows around Grantham including the A52 / High Street / Sankt Augustin Way and continuing to monitor and optimise traffic signals throughout central Grantham

## **Delivering the strategy**



### **A collaborative approach**

The ownership and management of Grantham Transport Strategy lies with the Grantham Transport Strategy Board. The board has been in place over several years and has helped shape the process and content of this strategy. The board comprises of representatives from various departments of both the county council and South Kesteven District Council, including the Executive Member for Highways and Transportation.

The board is responsible for progressing the proposals outlined within the transport strategy. They will do this via further assessment, appraisal or optioneering work and should seek opportunities to deliver the interventions for example through identifying funding streams and bidding opportunities. Securing funding is vital to the strategy and this is likely to remain a challenge over the course of the strategy period. A key role of the strategy board will be to identify and secure funding from the range of existing and potential sources including internal budgets and developer contributions.

Some interventions in the strategy offer opportunities to secure third-party funding. Collaboration with developers at an early stage is essential so that low carbon and sustainable travel choices can be embedded into new developments and funding secured for off-site measures.

The content of this transport strategy includes proposals to be brought forward over the short, medium, and long-term up to 2036. It is the board's responsibility to ensure that each proposal is assigned a suitable board member as a 'champion' to progress the initiative. Whilst there may be a single 'champion' for each proposal, the board member should establish a suitable delivery team to progress the work forward.

It is important to recognise that, whilst the development of the strategy has been led by the councils, no single organisation, or single intervention can deliver the vision and objectives alone. The success of the strategy will very much depend on the hard work, support, resources, and funding of a range of stakeholders. The general public also has a role to play in supporting the delivery of interventions outlined in this strategy to improve access to opportunities and connectivity in Grantham.

## Programming the strategy

The strategy sets out the long-term ambition for transport and travel in Grantham and aligns with the long-term horizons of the South Lincolnshire Local Plan and the Lincolnshire Local Transport Plan.

There are timescales associated with the delivery of all the proposals in the strategy and the transport strategy board will ensure that measures are delivered as soon as is feasible and affordable.

## Monitoring the strategy

The transport strategy board will monitor and review the progress of delivery of the transport strategy, and provide a progress report at a minimum of five-year intervals. Continual monitoring of progress is vitally important to ensure improvements are being made.

A set of specific and measurable outcomes that the strategy will be assessed against has been developed:

- Reduced traffic in the urban area and an increase in the number of journeys made by walking, cycling and public transport
- Continued growth in Grantham's economy and the delivery of sustainable transport options through new housing and employment sites, including the Sustainable Urban Extensions
- Reduced carbon emissions from transport helping Lincolnshire County Council and South Kesteven District Council to reach their net zero carbon emission targets
- Increased access to education by walking, cycling and public transport
- Improved air quality, increased physical activity and safety

