

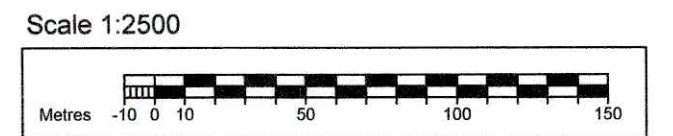
(Continued on Sheet 2 of 2)

MAP REFERRED TO IN
 THE LINCOLNSHIRE COUNTY COUNCIL
 (A52 GRANTHAM SOUTHERN GROWTH
 CORRIDOR - GRANTHAM SOUTHERN
 RELIEF ROAD)
 COMPULSORY PURCHASE ORDER 2018
 Sheet 1 of 2
 LCCM6

This map is reproduced from Ordnance Survey material with the permission of Ordnance Survey on behalf of the Controller of Her Majesty's Stationary Office.
 © Crown Copyright
 Unauthorised reproduction infringes Crown copyright and may lead to prosecution or civil proceedings.
 Lincolnshire County Council License No.: 100025370

DRAFT
 05/12/2018
 THIS DRAWING IS SUBJECT TO CHANGE AND HAS NOT BEEN APPROVED FOR ISSUE EXCEPT FOR DISCUSSION OR REFERENCE PURPOSES

SC
 This Plan, Inspector's document LCCM6 replaces the attached plan, by modification by the Secretary of State for Transport upon confirmation of the Order by him



I:\Shared\LandJobs\Grantham_SQLE_CAD\CAD\OD10 - CPO\OD10-01.dwg