

STATEMENT AND MAP PURSUANT TO SECTION 31(6) OF THE HIGHWAYS ACT 1980

1. I am a Director of Mark Caudwell Limited which Company is wholly owned by the trustees of the M Caudwell 1997 Settlement ("the Settlement") of which I am also a trustee. Mark Caudwell Limited, the Settlement and the trustees of the M L Caudwell Pension Scheme, of which I am also a trustee ("the Pension Scheme") are the owners of the freehold property at Habertoft and Hogsthorpe ("the Property") shown edged red on the map attached to this statement ("the Map").

Together with the M-Caudwell 1987 Trust

2. The Property has been owned by Mark Caudwell Limited, the Settlement and, the Pension Scheme since 1989.

and the M-Caudwell 1987 Trust

3. The Property is situated in the local authority district of East Lindsey in the county of Lincolnshire.

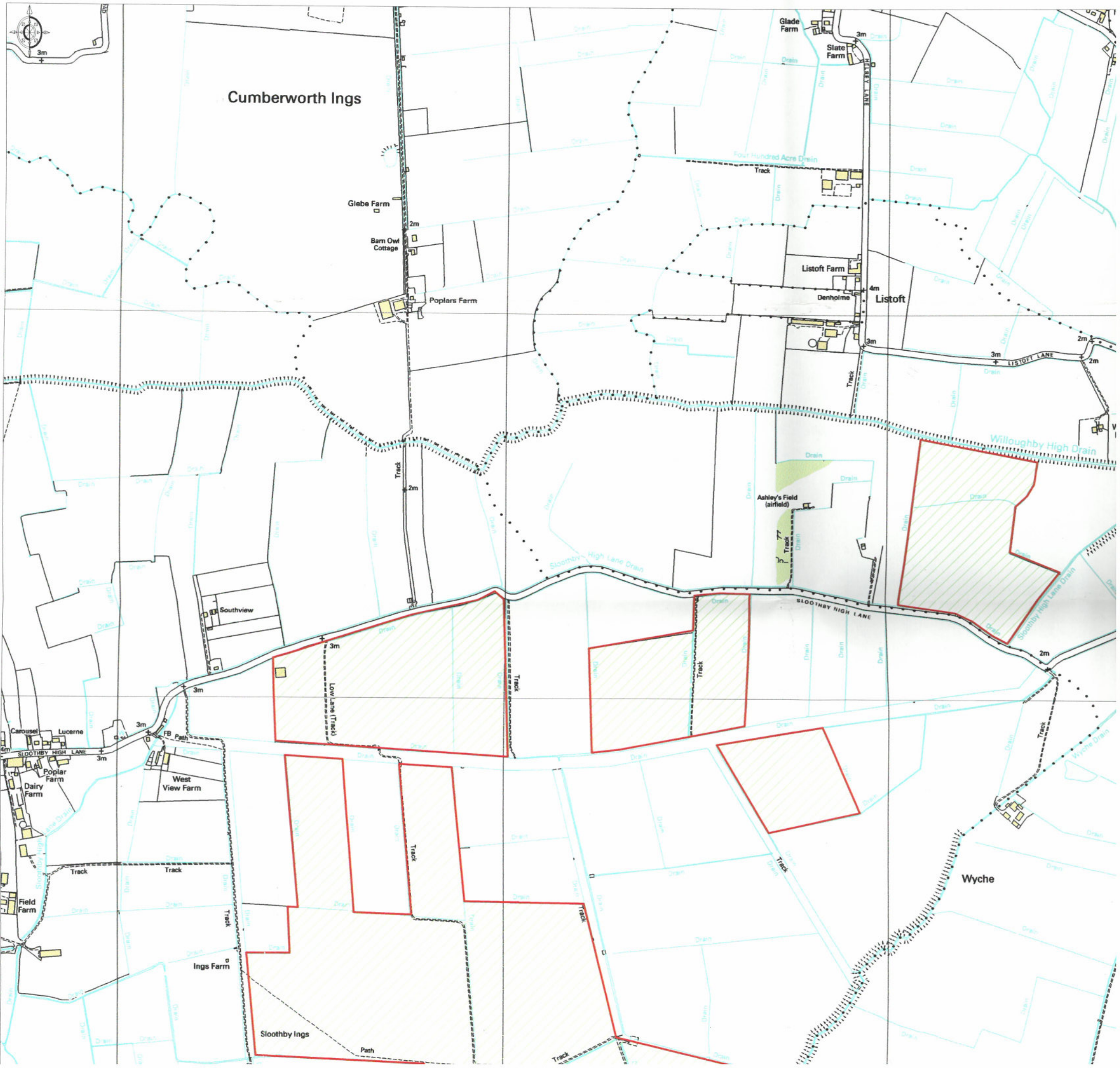
4. The ways coloured orange on the Maps are public footpaths.

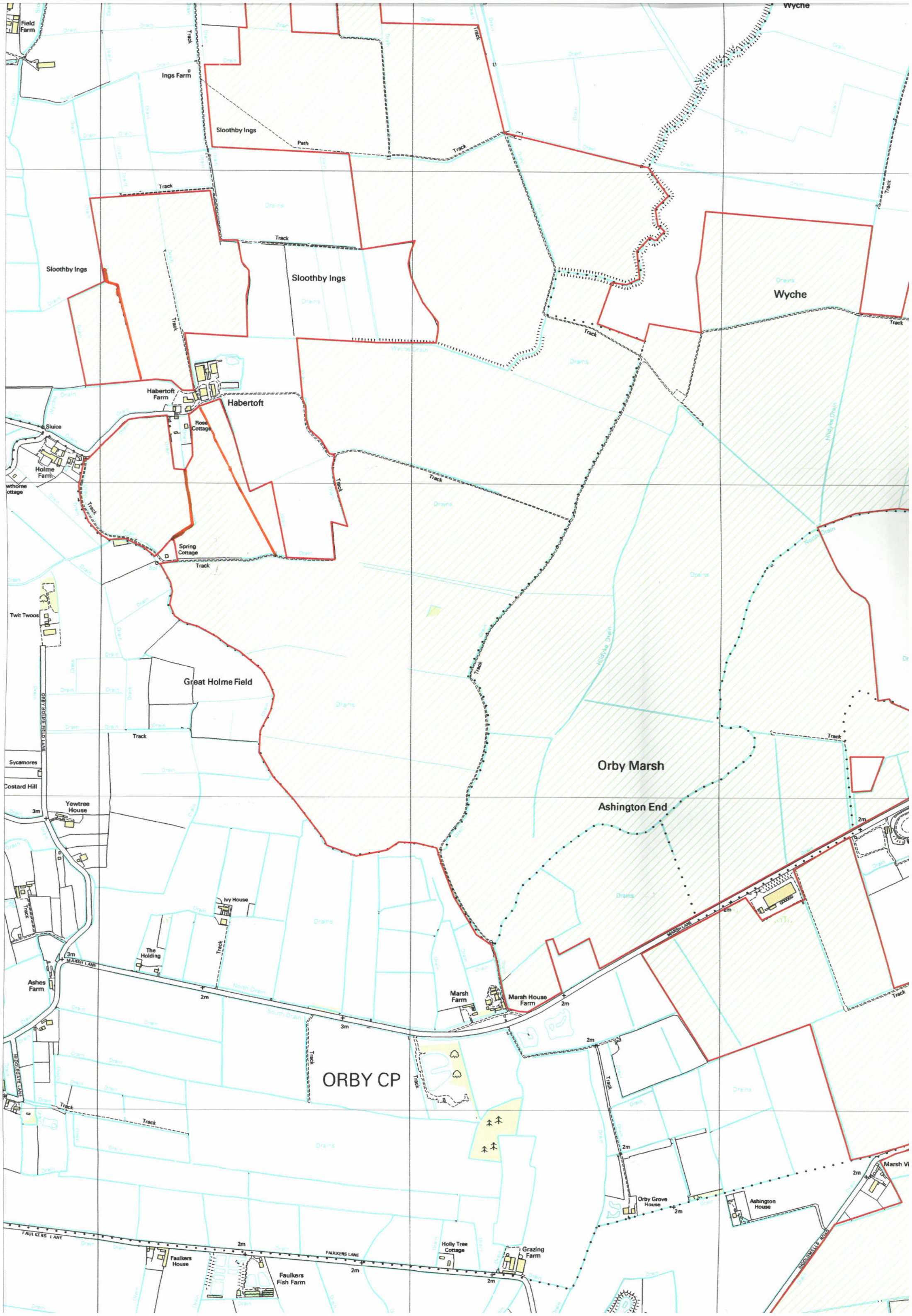
5. There are no other ways over the Property which have been dedicated as highway.

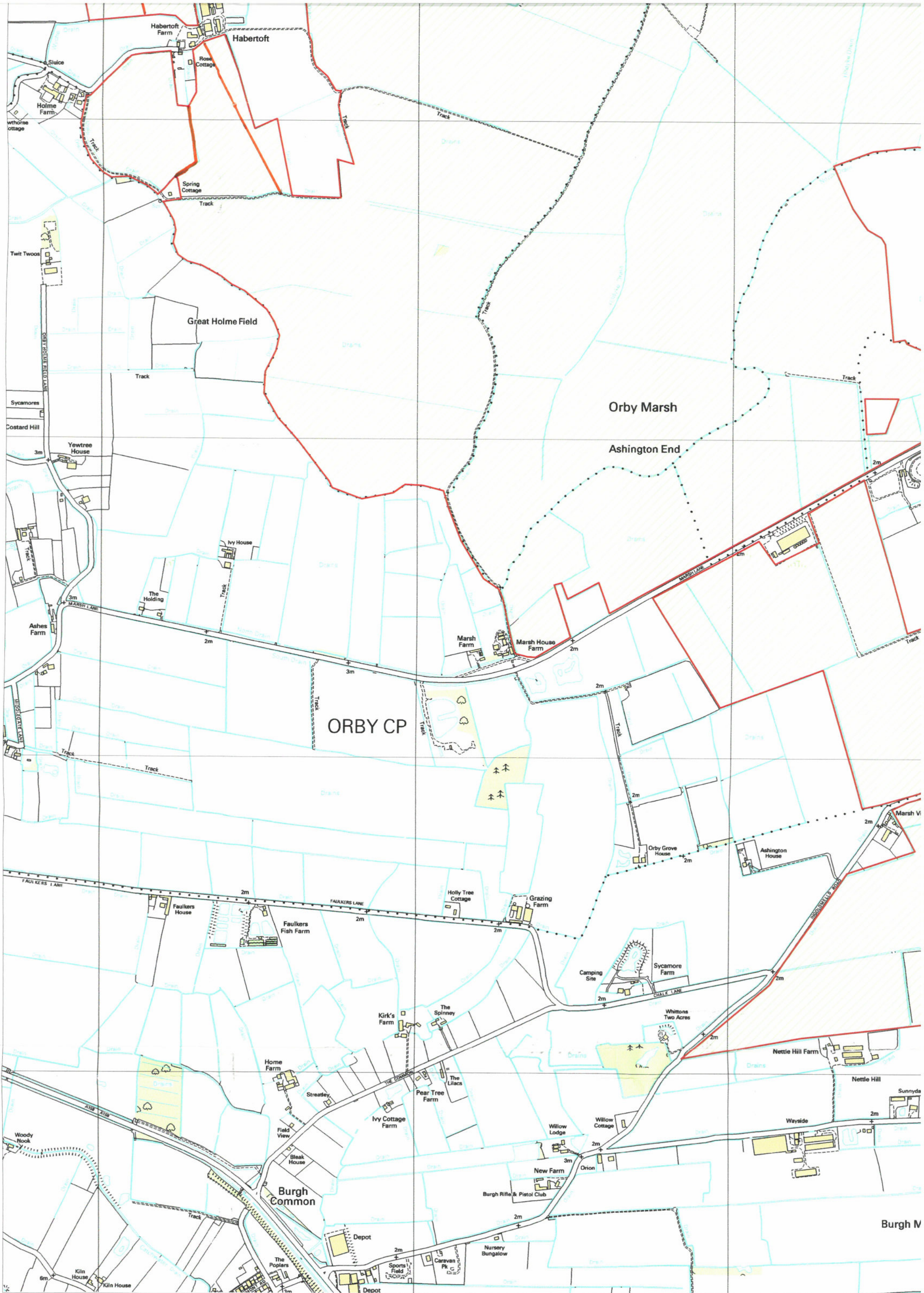
6. My deposit comprises this statement and the Map.

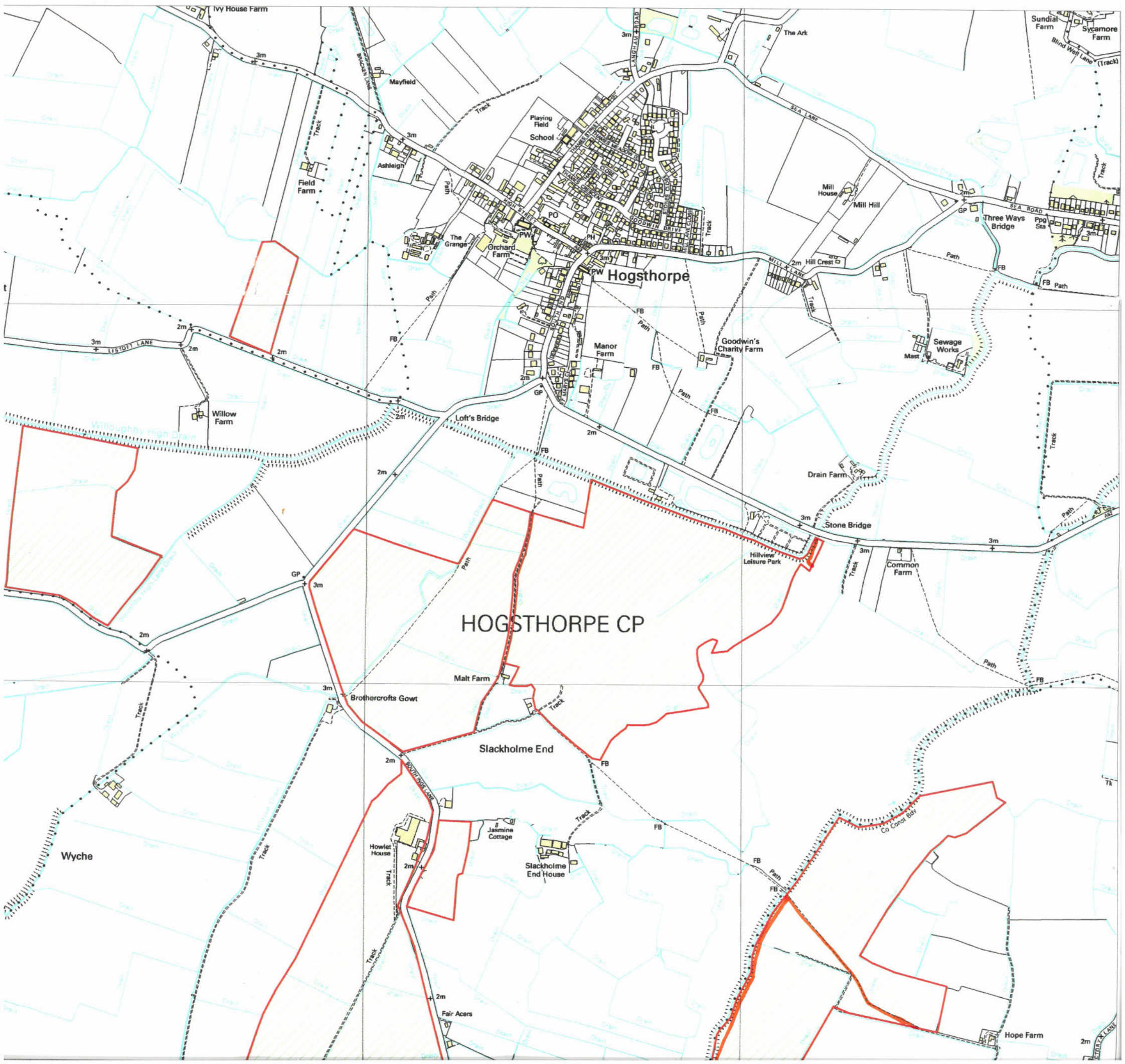
Signed 
Mark Leopold Caudwell

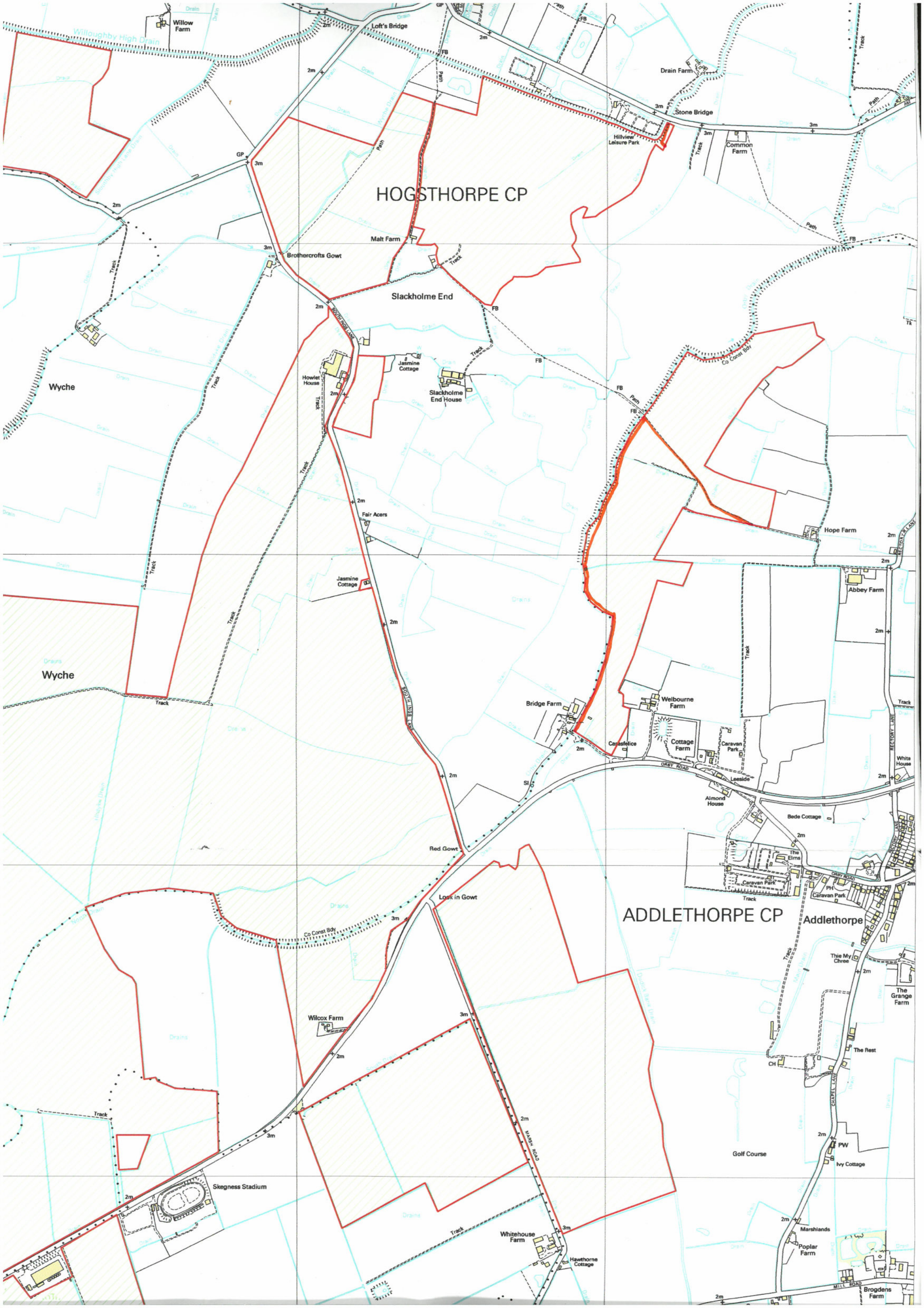
Date *20/9/2013*











HOGSTHORPE CP

ADDLETHORPE CP

Slackholme End

Addlethorpe

Wyche

Wyche

Willow Farm

Loft's Bridge

Drain Farm

Stone Bridge

Hillview Leisure Park

Common Farm

Brothercrofts Gowt

Malt Farm

Slackholme End

Howlet House

Slackholme End House

Fair Acres

Jasmine Cottage

Hope Farm

Abbey Farm

Bridge Farm

Welbourne Farm

Cottage Farm

Caravan Park

Almond House

Bede Cottage

The Elms

Caravan Park

Caravan Park

Red Gowt

Look in Gowt

Wilcox Farm

This My Chree

The Grange Farm

The Rest

Skegness Stadium

Golf Course

Ivy Cottage

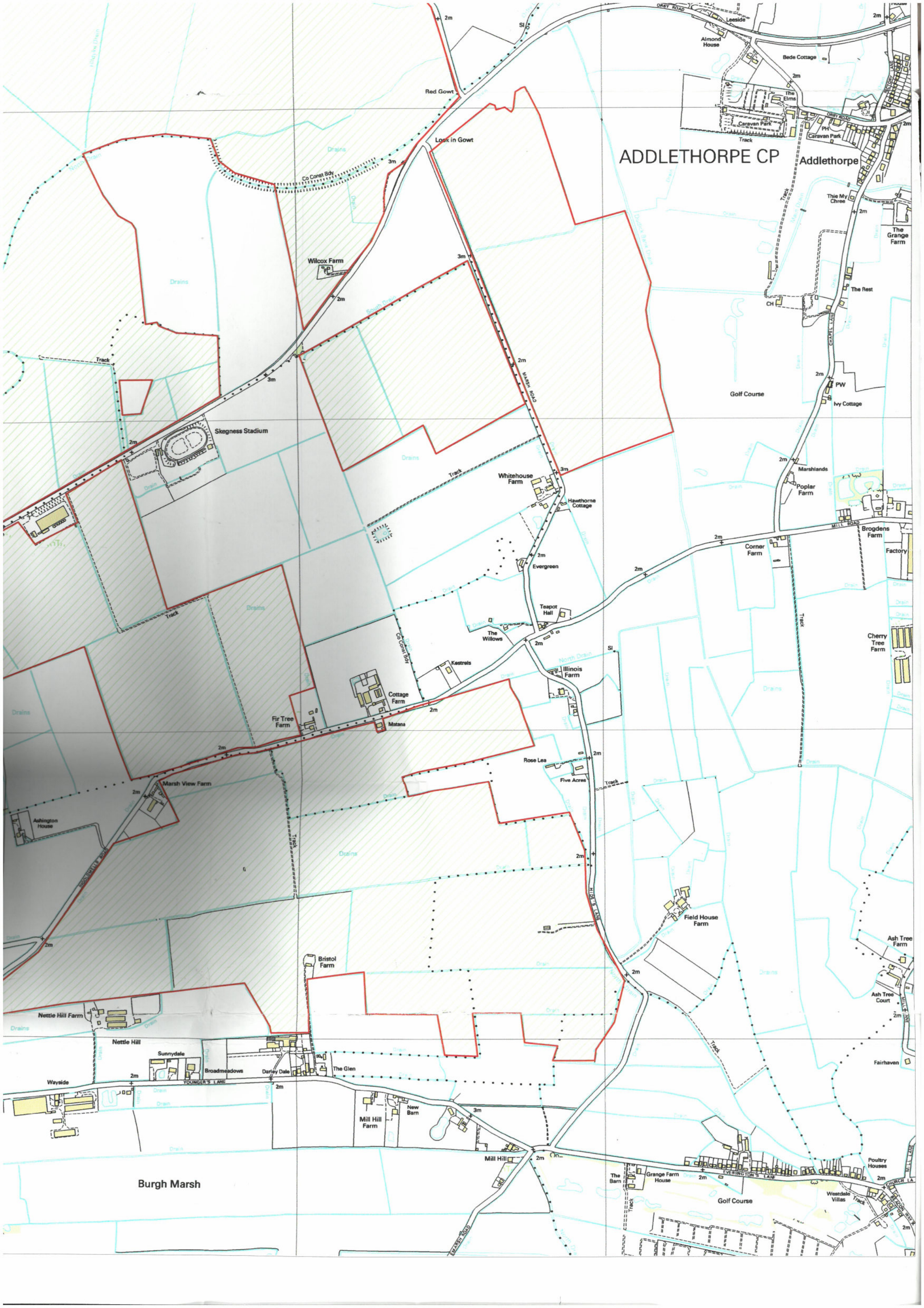
Whitehouse Farm

Hawthorne Cottage

Marshlands

Poplar Farm

Brogdens Farm



ADDLETHORPE CP

Addlethorpe

Burgh Marsh

Wilcox Farm

Skegness Stadium

Whitehouse Farm

Fir Tree Farm

Bristol Farm

Nettle Hill Farm

Nettle Hill

Sunnydale

Broadmeadows

Darley Dale

The Glen

Mill Hill Farm

Mill Hill

The Barn

Grange Farm House

Golf Course

Westdale Villas

Red Gowt

Look in Gowt

Co Coast Bdy

Wilcox Farm

Whitehouse Farm

Fir Tree Farm

Bristol Farm

Nettle Hill Farm

Nettle Hill

Sunnydale

Broadmeadows

Darley Dale

The Glen

Mill Hill Farm

Mill Hill

The Barn

Grange Farm House

Golf Course

Westdale Villas

Red Gowt

Look in Gowt

Co Coast Bdy

Wilcox Farm

Whitehouse Farm

Fir Tree Farm

Bristol Farm

Nettle Hill Farm

Nettle Hill

Sunnydale

Broadmeadows

Darley Dale

The Glen

Mill Hill Farm

Mill Hill

The Barn

Grange Farm House

Golf Course

Westdale Villas

Golf Course

Marshlands

Poplar Farm

Corner Farm

Cherry Tree Farm

Ash Tree Farm

Ash Tree Court

Fairhaven

Poultry Houses

Almond House

Bede Cottage

The Elms

Caravan Park

Caravan Park

The My Chree

The Grange Farm

The Rest

CH

PW

Ivy Cottage

Brogdens Farm

Factory

Cherry Tree Farm

Ash Tree Farm

Ash Tree Court

Fairhaven

Poultry Houses

Almond House

Bede Cottage

The Elms

Caravan Park

Caravan Park

The My Chree

The Grange Farm

The Rest

CH

PW

Ivy Cottage

Brogdens Farm

Factory

Cherry Tree Farm

Ash Tree Farm

Ash Tree Court

Fairhaven

Poultry Houses

I, Mark Leopold Caudwell, of Howlett House, Slackholme End, Hogsthorpe, Skegness, Lincolnshire PE24 5NS do solemnly and sincerely declare that:

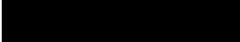
1. I am a Director of Mark Caudwell Limited which Company is wholly owned by the trustees of the M Caudwell 1997 Settlement ("the Settlement") of which I am also a trustee. Mark Caudwell Limited, the Settlement, the M Caudwell 1987 Trust ("the Trust") and the trustees of the M L Caudwell Pension Scheme, of which I am also a trustee ("the Pension Scheme") are the owners of the freehold property at Habertoft and Hogsthorpe ("the Property") shown edged red on the Map referred to in paragraph 3 of this declaration.
2. The Property has been owned by Mark Caudwell Limited, the Settlement, the Trust and the Pension Scheme since 1989.
3. On the 24th September 2013, I deposited with Lincolnshire County Council a statement ("Statement") and map ("Map") pursuant to section 31(6) of the Highways Act 1980 in respect of the Property. The Statement acknowledged that the ways coloured orange on the Map are public footpaths.
4. The Statement stated that there are no other ways over the Property which have been dedicated as highways.
5. Since 24th September 2013, which is the date the Statement was deposited with Lincolnshire County Council, there has been no dedication of any further highway over the Property.
6. I have no current intention to dedicate any further highway over the Property.

I make this solemn declaration conscientiously believing the same to be true and by virtue of the Statutory Declarations Act 1835.

Declared at 'Auntie House' 45 Algeton
Road, Skegness, Lincolnshire

on 25th September 2013

before me

Signed.....  FCI LEX

A commissioner for oaths ~~or a solicitor empowered to administer oaths.~~