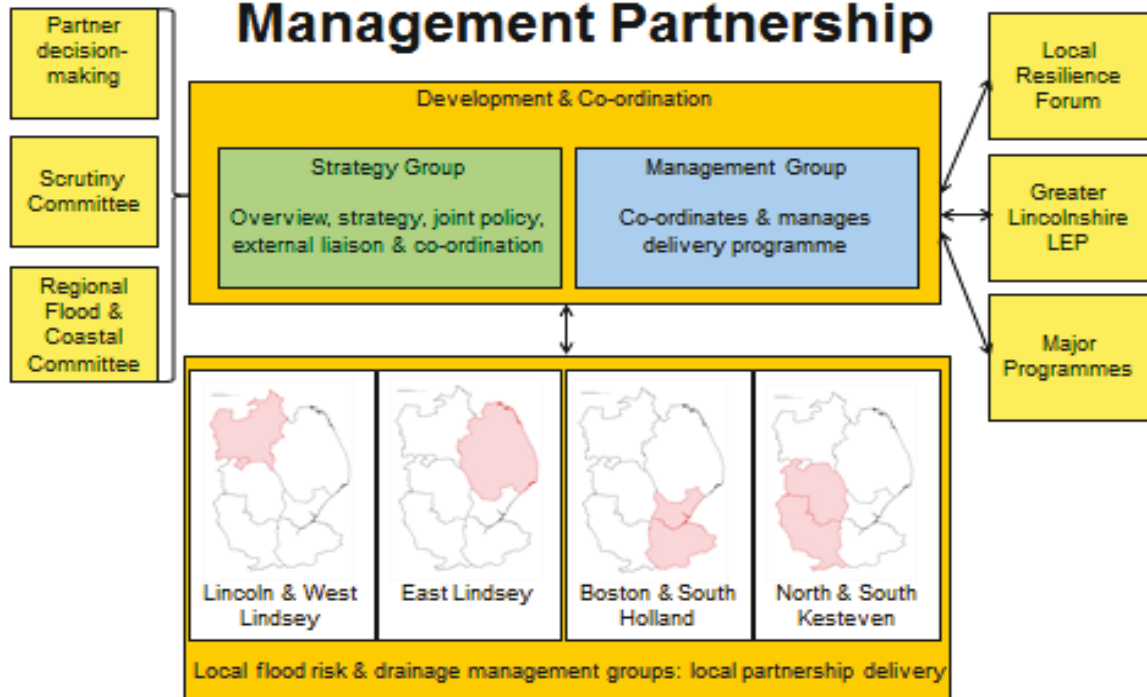


Lincolnshire Flood Risk and Water Management Partnership

Governance and Functions

Lincolnshire Flood Risk & Water Management Partnership



PARTNER ORGANISATIONS

The Environment Agency
(Lincolnshire & Northamptonshire Area)

Lincolnshire County Council
West Lindsey District Council
East Lindsey District Council
City of Lincoln Council
North Kesteven District Council
South Kesteven District Council
Boston Borough Council
South Holland District Council
ADA (Lincolnshire and Welland Branches)
Scunthorpe & Gainsborough WMB
Trent Valley IDB
Ancholme IDB
Anglian (Northern) RFCC
Greater Lincolnshire LEP

North East Lindsey IDB

Lindsey Marsh DB
Witham First District IDB
Upper Witham IDB
Witham Third IDB
Witham Fourth District IDB
Black Sluice IDB
Welland and Deepings IDB
South Holland IDB
North Level IDB

King's Lynn IDB
Anglian Water
Severn Trent Water
Lincolnshire Resilience Forum
Water Resource East

PURPOSE OF THIS DOCUMENT

This document describes the key governance structures and functions of the Lincolnshire Flood Risk and Water Management Partnership. It accompanies the Joint Lincolnshire Flood Risk and Drainage Management Strategy, and describes the mechanisms that the Partnership will use to develop and co-ordinate the objectives and actions defined in the Strategy. This includes how individual partner organisations will engage with the partnership, and how decision-making, accountability and delivery will be ensured.

OVERVIEW

This partnership provides co-ordinated management and delivery of flood risk and drainage functions of all relevant organisations across Lincolnshire. It also co-ordinates and manages the vital contribution that is made to promoting sustainable growth through the Greater Lincolnshire LEP, and the development of strategic solutions to water resource provision in the long term.

The partnership seeks to undertake its role in a way that is tailored to the geographical, social, economic and environmental characteristics of Lincolnshire, within the broader framework of national policy and regional growth and environmental opportunities.

Its purpose is to ensure that local communities, businesses and infrastructure are better protected from flood risk, that improved resilience towards flood risk is built into all aspects of planning and service provision in the future, and that effective management of these risks supports the county's aspirations for future growth.

The **Strategy Group** exists to provide strategic and policy direction to the partnership as a whole and to co-ordinate delivery of flood risk and water level management in relation to wider initiatives focusing on growth and water resource management. It acts to integrate the strategic direction of the Environment Agency's flood and coastal risk management overview role with that of all local risk management authorities, and to provide a key linkage between national, regional and local policy.

The Strategy Group oversees development of key strategic priorities, such as the Joint Lincolnshire Flood Risk and Water Management Strategy, and guides co-ordination with major strategies and plans developed by key stakeholders. This includes the GLLEP's Strategic Economic Plan and Water Management Plan, Water Companies WRMPs and AMPs and the main emergency preparedness plans covering the county.

For this reason the Strategy Group is chaired by the Environment Agency, to reflect the direct linkage into national policy on flood risk, and includes direct representation in behalf of the Greater Lincolnshire LEP, the Lincolnshire Resilience Forum and the Regional Flood and Coastal Committee.

The **Management Group** oversees an integrated programme of delivery across the county within the Common Works Programme. It is chaired by Lincolnshire County Council as the Lead Local Flood Authority and includes all risk management authorities operating within Lincolnshire. Its role is to co-ordinate and implement key countywide functions. It ensures effective alignment of risk management authorities' work on the ground, and including co-ordination between the capital six-year programme and delivery of the LLFA's local roles and responsibilities. empowering the **Local Flood Risk and Drainage Management Groups** to deliver flood risk management and drainage solutions at the local level.

The **Local Flood Risk and Drainage Management Groups** provide flood risk management and drainage solutions developed by the consensus of partner organisations and tailored to meet local circumstances. They are responsible for identifying local issues and developing solutions which go beyond the core responsibilities of individual risk management authorities. They play an important role in liaising with Local Planning Authorities and in delivering a co-ordinated approach to local flood risk and drainage management.

The work of risk management authorities within the partnership is overseen by the **Flood Risk and Water Management Scrutiny Committee**. The 2010 Act requires arrangements for public scrutiny of flood risk management undertaken by all flood risk management authorities, and this committee has been established to fulfil this role in the context of wide-ranging partnership approach implemented in Lincolnshire.

STRATEGY GROUP

The Strategy Group takes a strategic overview of flood risk from all sources and drainage management across Lincolnshire. It manages co-ordination of these matters with wider economic growth and water resource management initiatives. It ensures effective integration of flood risk planning and response at a strategic level in the county, and is the central point of liaison between local, regional and national level policy developments. The group is chaired by the Environment Agency, and meets three times a year. One of these meetings is held as a broad based summit for all stakeholders to maintain co-ordination and co-operation across all aspects of water management within Lincolnshire.

Key Roles

- Strategic influencing link between national, regional and local policy
- Co-ordination and management of all flood risk and related aspects of economic, water resource and other initiatives, plans and strategies
- Strategic guidance to the Management Group, GLLEP Water Management Board and South Lincolnshire Water Partnership
- Regular reviews of partnership roles and performance
- Promotion of co-ordinated approaches to flood and coastal risk management investment, planning and delivery across Lincolnshire, integrated with arrangements for emergency response
- Agreement of appropriate joint approaches to risk management strategies for all sources of flood risk and for their support for wider economic growth and water resource purposes (for example Shoreline Management Plans, Saltfleet to Gibraltar Point Strategy, Water Resources East, GLLEP Water Management Plan)).
- Promote risk-based investment strategies and plans for flood risk and drainage management across Lincolnshire
- Maximise opportunities to influence partner strategies and resource allocation and to maximise external funding
- Liaison with national and regional groups such as the Coastal Groups, Defra FCERM Stakeholder Group, Association of Drainage Authorities
- Engage with and influence national consultations and policy developments on behalf of all risk management authorities across Lincolnshire

Membership

- Environment Agency (Area Manager) (Chair)
- Lincolnshire County Council (Executive councillor and senior commissioning officer)
- District Councils (Three executive councillors and two senior officers on behalf of all seven)
- Internal Drainage Boards (Chairman; IDBs/ADA Officer – to be determined by ADA Lincolnshire & Welland Branch)
- Anglian Water (Catchment Manager)
- Lincolnshire Resilience Forum (Secretary)

- Chair of Partnership Management Group
- Regional Flood and Coastal Committee (Chair)
- Greater Lincolnshire LEP (Chair of Water Management Board)
- Water Resources East

Frequency

Three times a year, hosting an annual flood risk and water management summit for all stakeholders

Secretariat

Environment Agency

Key Links

- Management Group
- Regional Flood and Coastal Committee
- Flood Risk and Water Management Scrutiny Committee
- Lincolnshire Resilience Forum
- Defra Flood Risk and Coastal Erosion Stakeholder Forum
- GLLEP Water Management Board
- ADA (national)

MANAGEMENT GROUP

The Management Group is responsible for developing and implementing a co-ordinated joint programme of works and appropriate management mechanisms for flood risk and water level management across Lincolnshire, ensuring that the delivery responsibilities of each partner organisation are mutually supporting. While individual organisations retain their specific roles and responsibilities, the Management Group exists to support co-operative implementation and to promote joint approaches to delivery where necessary.

The Management Group is the primary focus for developing the operational plan to implement the Joint Lincolnshire Flood Risk and Water Strategy, ensuring that LLFA services are aligned with those of partners and managing the Common Works Programme as the annually revised action plan for the Strategy.

Liaison with the Environment Agency is a key role, to ensure seamless meshing of regional with local priorities, and to implement a consistent approach to local prioritisation. This will drive the annual submission for Local Levy funding from the RFCC.

As well as ensuring that countywide strategic resources are in place, the group will co-ordinate consistent working practices across the county where this is appropriate. It will also resolve specific operational issues as they arise, including resolving uncertainties over individual partners' flood risk and drainage management roles and responsibilities, strategic issues in respect of a particular development, or local issues as and when referred by a local delivery group.

The management group will be chaired by Lincolnshire County Council. It will meet at least every three months, times to complement meetings of the Strategy Group and will consist of senior operational officers from each of the organisations that deliver flood risk and drainage services within Lincolnshire.

Key Roles

- Develop and implement local flood risk management strategies and plans, ensuring appropriate monitoring and reporting arrangements to Strategy Group, Scrutiny Committee and the RFCC
- Oversee the delivery of partners' flood risk management and drainage work and actively pursue funding opportunities
- Support implementation of action plans for (eg), SMPs, PACM, options arising from the Saltfleet to Gibraltar Point Strategy and relevant elements of the GLLEP Water Management Plan and options emerging from the development of appropriate proposals through Water Resources East.
- Prioritise available funding and resource for partnership initiatives and co-ordinate bids for additional funding, supporting the Lead Local Flood Authority to deploy resources where needed
- Ensure data sharing and communications mechanisms meet the needs of partner organisations and local communities

- Provide a focal point for liaison with the delivery arms of all relevant partner organisations within Lincolnshire, including the County Council and District Councils (particularly highways, planning and development management services), Environment Agency, Internal Drainage Boards, water and sewerage companies, developers, statutory undertakers, emergency services, riparian landowners and developers, in order to facilitate enhanced joint working between partners
- Guide the development of joint strategies for promoting public awareness and confidence in flood, coastal and drainage risk management arrangements, ensuring effective linkage with communications designed for emergency situations
- Provide reports to Local Authority scrutiny committee and manage and co-ordinate flow of requests for information for scrutiny and other purposes
- Ensure that elected Members are fully briefed on all aspects of flood, coastal and drainage risk management affecting Lincolnshire
- Resolve problems referred by Local Flood Risk and Drainage Groups with regards to SUDS and other drainage solutions work with local planning authorities and development control to establish common objectives and outcomes
- Support the Lincolnshire Resilience Forum, ensuring lessons learned from emergency incidents inform approach to long-term flood and drainage management, particularly with regard to resilience and planning
- Co-ordinate and support development of commissioning arrangements that may be established between partners
- Provide an arbitration role on responsibility for assets and for roles and responsibilities arising from new arrangements
- Support preparation of joint flood risk management asset register and associated asset management plans
- Exchange and develop local policy ideas with Strategy Group

Membership

- Environment Agency (Flood and Coastal Risk Manager)
- Lead Local Flood Authority (Chief Operating Officer / Senior Commissioning Officer) (Chair)
- District Councils (Senior officer as determined by each district)
- Internal Drainage Boards (Chief Executives or senior engineers as determined by IDBs)
- Anglian Water (Catchment Manager)
- Lincolnshire Resilience Forum (Officer as determined by the LRF)
- Chairs of Local Delivery Groups (one representing all four)

Frequency

Every three months timed to co-ordinate with Strategy Group

Secretariat

Lincolnshire County Council

Key Links

- Strategy Group
- Local Delivery Groups
- Local Authority Scrutiny
- Lincolnshire Resilience Forum
- South Lincolnshire Water Partnership

LOCAL FLOOD RISK AND DRAINAGE MANAGEMENT GROUPS

Local Flood Risk and Drainage Management Groups maximise opportunities to co-ordinate partner resources with the objective of providing an integrated approach to managing flood risk for local communities, including the delivery of local projects and solutions to flood and surface water risk and drainage management.

They take a proactive approach towards identifying and solving local flood risk issues. They work to develop and maintain effective working partnerships with all relevant partner agencies delivering flood risk and drainage services at the local level.

The Local Flood Risk and Drainage Management Groups are based on LCC Local Highway Area boundaries. They continue to build on the previous local drainage groups, with enhanced support provided through the framework, including a coherent strategic and policy environment and a greater capacity to co-ordinate opportunities for funding and provision of resources.

Local Flood Risk and Drainage Management Groups will meet as often as necessary to conduct their business, but should be at least 4 times a year, and will consist of service managers from all relevant partner agencies with responsibility for delivery within the local area. They will be chaired by the Lead Local Flood Authority. Each Group will make arrangements for secretarial support.

Tasks

- Deliver work programmes/action plans as directed by the Management Group
- Integrate and share partners' knowledge concerning local flood risk and drainage issues, including those relating to proposed developments
- Improve co-ordination at local delivery level between a range of partners, including use of enforcement and consenting powers on ordinary watercourses
- Improve effectiveness of use of partners' resources
- Maintain the joint flood risk management asset register and associated asset management plans
- Monitor minor works for reporting on an exception basis to the Operational Management Group
- Identify joint flood risk management schemes for assessment as part of the Common Works Programme Prioritisation Process
- Inform development plans, infrastructure planning, asset operation and maintenance
- To identify and deliver bespoke solutions to flooding problems experienced by local communities on a day-to-day basis.
- Where solutions cannot be found quickly at local level, to refer such situations to the Operations Management Group for resolution

- Receive the Lead Local Flood Authority reports and recommendations arising from the Section 19 flood investigation process
- To implement learning from emergency situations to ensure that resilience and mitigation measures as locally appropriate are adopted by private, public and commercial landowners
- Manage communications flow with local communities on a day-to-day basis, including cascading necessary information to Operations Management Group

Membership

Membership will vary depending on local circumstances. As the local groups are established they will determine the best attendance and liaison arrangements to ensure effective co-ordination of service delivery. Suggested membership common to all four local groups is set out below.

- Environment Agency (As determined by Flood and Coastal Risk Manager)
- Highways & Lead Local Flood Authority (Local Highways Manager)
- District Council(s) (Head of Service or Service Manager)
- Anglian Water (Senior Asset Planner)
- Severn Trent Water Area Catchment Manager
- Internal Drainage Board(s) (As required to ensure effective functioning of group)
- Lincolnshire Resilience Forum (Emergency Planning Officer)
- LCC Development Management Officer

Frequency

As often as required to conduct the business of the group but should be at least 4 times a year.

Secretariat

To be decided by Groups

Key Links

Operations Management Group
Lincolnshire Resilience Forum

Organisational Membership of Local Flood Risk and Drainage Management Groups

West Lindsey & Lincoln

Environment Agency
Lincolnshire County Council
West Lindsey District Council
City of Lincoln Council
Joint Central Lincolnshire Planning Authority
North-East Lindsey IDB
Ancholme IDB
Scunthorpe & Gainsborough WMB
Witham First IDB
Upper Witham IDB
Witham Third IDB
Trent Valley IDB
Anglian Water
Severn Trent Water
Lincolnshire Resilience Forum

East Lindsey

Environment Agency
Lincolnshire County Council
East Lindsey District Council
Lindsey Marsh IDB
Witham Third IDB
Witham Fourth IDB
Anglian Water
Lincolnshire Resilience Forum

North & South Kesteven

Environment Agency
Lincolnshire County Council
North Kesteven District Council
South Kesteven District Council
Upper Witham IDB
Black Sluice IDB
Welland and Deepings IDB
Anglian Water
Severn Trent Water
Lincolnshire Resilience Forum
Joint Central Lincolnshire Planning Authority

Boston & South Holland

Environment Agency
Lincolnshire County Council
Boston Borough Council
South Holland District Council
Witham Fourth IDB
Black Sluice IDB
Welland and Deepings IDB
South Holland IDB
North Level IDB
Kings Lynn IDB
Anglian Water
Lincolnshire Resilience Forum

SCRUTINY

Under the Flood and Water Management Act, Lead Local Flood Authorities are required to ensure that robust local authority elected member scrutiny is put in place. This is reinforced by specific provisions that require flood risk management authorities to provide information or reports to the Scrutiny Committee, and to have regard to recommendations made by the Committee.

The County and District Councils established the Flood risk and Drainage Management Scrutiny Committee in November 2010, which was reconstituted as the Flood Risk and Water Management Scrutiny Committee in May 2017. This Committee consists of voting members from Lincolnshire County Council and the seven district councils within the administrative boundary of the county. All risk management authorities have observer status. The Committee oversees strategy and delivery across the full range of activities undertaken by the partnership.

LOCAL RESILIENCE FORUM

The Lincolnshire Resilience Forum has played an active role in developing innovative and forward-looking arrangements for managing preparation, response and recovery in relation to flooding emergencies. Effective partnership working is in place to ensure that the emergency Local Flood Plan dovetails with the ongoing operational responsibilities of all partners in Lincolnshire.

As a result, there are very strong links between the day to day management of flood risk and drainage and preparedness for flooding emergencies. In many ways they can be seen as two sides of the same coin, depending upon the same datasets and risk information.

The Resilience Forum is represented within the partnership framework on the Strategy Board and the Operational Management Group, and plays a significant role in the local drainage groups, not least through supporting the provision and development of shared data on local incidents of flooding.

REGIONAL FLOOD AND COASTAL COMMITTEE

The Regional Flood and Coastal Committee (Anglian (Northern)) is the regional body charged with governance of national funding provided to the Environment Agency, Lead Local Flood Authorities and IDBs. It sets annually the amount of statutory Local Levy funding provided by County and Unitary Authorities for flood risk management across Lincolnshire and Northamptonshire (principally) and also annually sets the precept to be charged to IDBs for managing drainage flows into main rivers.

The Chair of the RFCC is appointed by Defra, while each County and Unitary authority has member representation on the Committee in proportion to the area of land covered by the RFCC. Lincolnshire County Council has three

seats on the Committee, and shares a fourth with North Lincolnshire Council which rotates annually.

Because RFCC boundaries are determined by main river catchments, Gainsborough and a section of the county along the east bank of the River Trent is covered by the Trent RFCC.

DATA MANAGEMENT AND COMMUNICATIONS

Data management and sharing is fundamental to effective operation of the partnership framework, ranging from digital resources available to all partners to enable proactive planning and effective intervention, to more immediate communications and warnings required in the event of flood events.. Communications provisions for emergency warning and response purposes are quite different from those required for normal conditions. Extensive research and testing since 2010 has led to the establishment of warning and information services to provide for the specific geography and demography of the east coast, as well as for individual communities inland.

ROLES AND RESPONSIBILITIES OF FLOOD RISK MANAGEMENT AUTHORITIES WITHIN THE PARTNERSHIP

The table below summarises the roles and responsibilities incumbent on Flood Risk Management Authorities, in terms of specific tasks and related to the most relevant partnership groupings.

Strategy Group	
Role/Responsibility	Organisation
Prepare National Flood and Coastal Erosion Risk Management Strategy	Environment Agency
Provide guidance to other flood risk management authorities	Environment Agency
Duty to act consistently with National Flood and Coastal Erosion Risk Management Strategy	LLFA District Councils IDBs Water Companies
Prepare local flood risk management plans (eg SMPs, CFMPs) for coasts & main rivers	Environment Agency
Contribute to local flood risk management plans and strategies – e.g. SMPs, CFMPs, Coastal Study	All flood risk management authorities
Prepare national preliminary flood risk assessment & flood risk maps	Environment Agency
Duty to co-operate with other risk management authorities	All risk management authorities
Strategic leadership for all surface water issues in Lincolnshire	LLFA
Duty to have regard to Local Flood Risk Management Plan	Environment Agency Water Companies
Duty to act consistently with Local Flood Risk Management Plan	District Councils IDBs
Establish and maintain local authority scrutiny function	LLFA
Provide information to local authority scrutiny and have regard to recommendations	All flood risk management authorities
Flood warning	Environment Agency
Local Authority Scrutiny	LLFA District Councils
Liaison with Regional Flood and Coastal Committee	All flood risk management authorities
Liaison with Lincolnshire Resilience Forum (strategic)	All flood risk management authorities

Management Group	
Duty to act consistently with National Flood and Coastal Erosion Risk Management Strategy	EA LLFA District Councils IDBs Water Companies
Prepare local flood risk management plans (eg SMPs, CFMPs) for coasts & main rivers	Environment Agency
Contribute to local flood risk management plans and strategies – e.g. SMPs, CFMPs, Coastal Study	All flood risk management authorities
Prepare local flood risk management strategies (eg Lincshire Strategy, Witham Strategy)	Environment Agency
Prepare national preliminary flood risk assessment & flood risk maps	Environment Agency
Duty to co-operate with other risk management authorities	All risk management authorities
Strategic leadership for all surface water issues in Lincolnshire	LLFA
Prepare Local Flood Risk Management Plan	LLFA
Provide guidance on working with local flood risk management plan	LLFA
Contribute to developing Local Flood Management Strategy	Environment Agency District Councils IDBs Water Companies
Duty to have regard to Local Flood Risk Management Plan	Environment Agency Water Companies
Duty to act consistently with Local Flood Risk Management Plan	District Councils IDBs
Preliminary flood risk assessment & flood maps	LLFA
Power to request information from risk management authorities	Environment Agency LLFA
Compile & maintain flood risk management asset register	LLFA
Provision of asset management data	All flood risk management authorities
Developing Surface Water Management Plans	LLFA District Councils IDBs Water Companies
Strategic spatial planning – statutory consultation on flood risk and drainage aspects of planning applications	LLFA District Councils
Establish and maintain local authority scrutiny function	LLFA
Provide information to local authority scrutiny and have regard to recommendations	All flood risk management authorities
Flood warning	Environment Agency
Liaison with Regional Flood and Coastal	All flood risk management authorities

Committee	
Liaison with Lincolnshire Resilience Forum (strategic)	All flood risk management authorities
Capital Improvement Work National Grant in Aid (G.I.A.)	Environment Agency
Capital Work –Local Levy incl General Drainage Charge	Environment Agency
Administer Grants for IDBs and Las e.g. GIA Capital , Property Resilience grant, SWMP grant	Environment Agency
Duty to act in accordance with principles of sustainable development (incl. biodiversity & environmental protection duties)	All flood risk management authorities
Delegate works and maintenance to other flood risk management authorities, incl. commissioning, contract management &c	Environment Agency LLFA District Councils IDBs
Respond to Regional Spatial Strategy flood risk policies	LLFA District Councils
Advising on and determining planning applications in flood risk areas	District Councils LLFA
Advice and guidance to planning authorities	Environment Agency IDBs LLFA
Data management & development of core resources for flood risk management & emergency response	All flood risk management authorities & LRF

Local Flood Risk and Drainage Management Groups	
Duty to act consistently with National Flood and Coastal Erosion Risk Management Strategy	LLFA District Councils IDBs Water Companies
Contribute to local flood risk management plans and strategies – e.g. SMPs, CFMPs, Coastal Study	All flood risk management authorities
Duty to co-operate with other risk management authorities	All risk management authorities
Strategic leadership for all surface water issues in Lincolnshire	LLFA
Contribute to developing Local Flood Management Strategy	Environment Agency District Councils IDBs Water Companies
Duty to have regard to Local Flood Risk Management Plan	Environment Agency Water Companies
Duty to act consistently with Local Flood Risk Management Plan	District Councils IDBs
Provision of asset management data	All flood risk management authorities
Developing Surface Water Management Plans	LLFA District Councils IDBs Water Companies
Provide information to local authority scrutiny and have regard to recommendations	All flood risk management authorities
Flood warning	Environment Agency
Raise flood risk awareness – coastal and rivers	Environment Agency
Raise flood risk awareness – surface water	All flood risk management authorities
Raise flood risk awareness – coastal and rivers	Environment Agency
Implement local flood risk management plans (eg SMPs, CFMPs) for coasts & main rivers	Environment Agency
River and Coastal Maintenance	Environment Agency
Asset & infrastructure surveys, inspections & maintenance – maintain databases	All flood risk authorities
Inspect & maintain EA reservoirs	Environment Agency
Enforcement on third party reservoirs	Environment Agency
Investigate incidents of flooding and assign responsibility where necessary	LLFA
Enforcement, consent and works on coast and main rivers	Environment Agency
Enforcement and consenting on ordinary watercourses	LLFA IDBs
Works powers on ordinary watercourses	District Councils IDBs

Undertake flood risk management schemes & maintain existing flood risk management measures	All flood risk management authorities
Enforcement on riparian owners	LLFA District Councils IDBs
Designation of features as flood risk management assets, with enforcement powers, incl. third party assets	Environment Agency LLFA IDBs District Councils
Land drainage & irrigation	IDBs
Water level management	IDBs
Manage areas of special flood risk	IDBs
Flood risk management works outside IDB areas	LLFA
Own and maintain public sewers	Water Companies
Emergency Call out and responses, sandbags and materials – first response work.	All flood risk management authorities
Data management & development of core resources for flood risk management & emergency response	All flood risk management authorities & LRF
SUDS advice and planning enforcement	LLFA / Local Planning Authority
Technical consultancy; site investigation/surveys [S38 & S278 design checks, technical and expert advice to others including pre planning app. meetings, resourcing/directing drainage investigations, feasibility reports, drainage design including major projects, hydraulic analysis & modelling, maintaining/revising design guides, training	LLFA
Advice to public	LLFA District Councils IDBs