

The Director of Recreational Services
Lincolnshire County Council
County Offices
Newland
LINCOLN
LN1 1YL

Ref: R A Mason Ltd, Barn Farm, Barn Farm, Grantham Road,
Harmston, Lincoln, LN5 9SH

I admit that the undermentioned ways, also shown on the
accompanying Map deposited by me with the Lincolnshire County
Council on the ninth day of August 1995 and coloured
Green have been dedicated as highways.

Description of Highways (with termini)

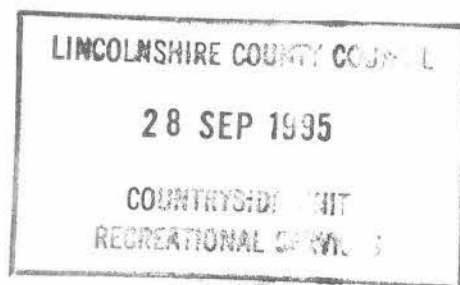
~~Farm track marked in green on map between points A and B.~~

Part of the Viking Way marked in blue on the map between
points A and B.



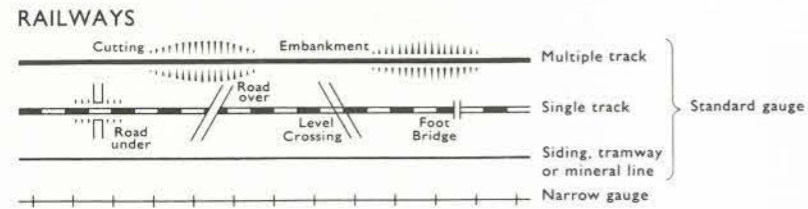
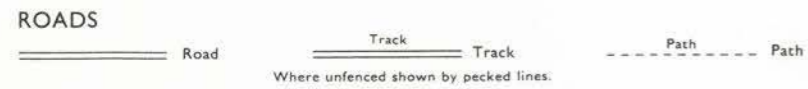
Signature of Landowner

Dated the Ninth day of August 1995

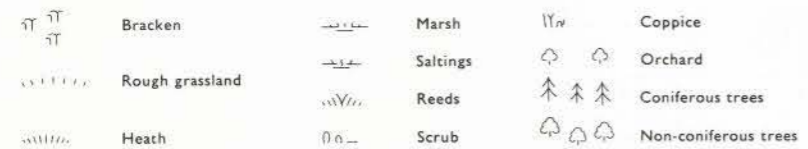


SCALE 1:10 000

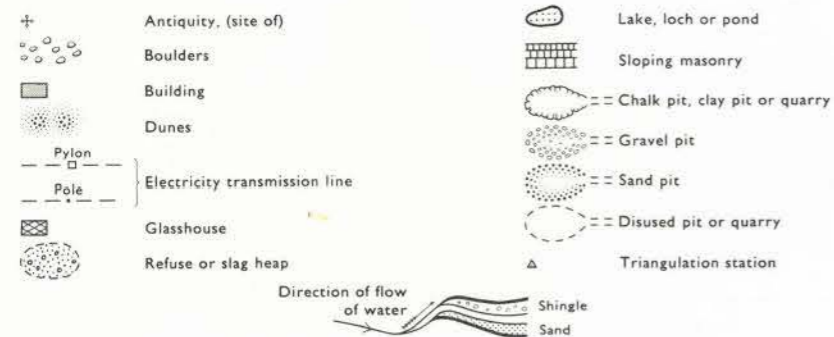
SYMBOLS



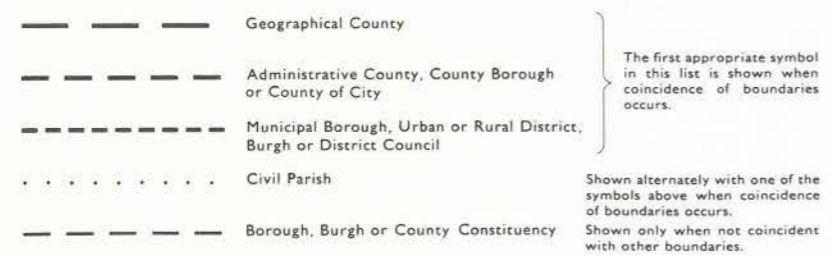
VEGETATION



MISCELLANEOUS



BOUNDARIES



HEIGHTS (METRES)

Values are given in metres above mean sea level at Newlyn.

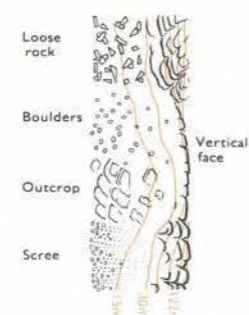
Surface heights 163m

Bench marks and their values are shown on large scale maps, and bench mark lists containing fuller and possibly later levelling information are obtainable from the Director General, Ordnance Survey.

CONTOUR NOTE

Contours have been surveyed in feet at a varying vertical interval but values are given to the nearest metre.

ROCK FEATURES



CONVERSION SCALE

Metres - Feet

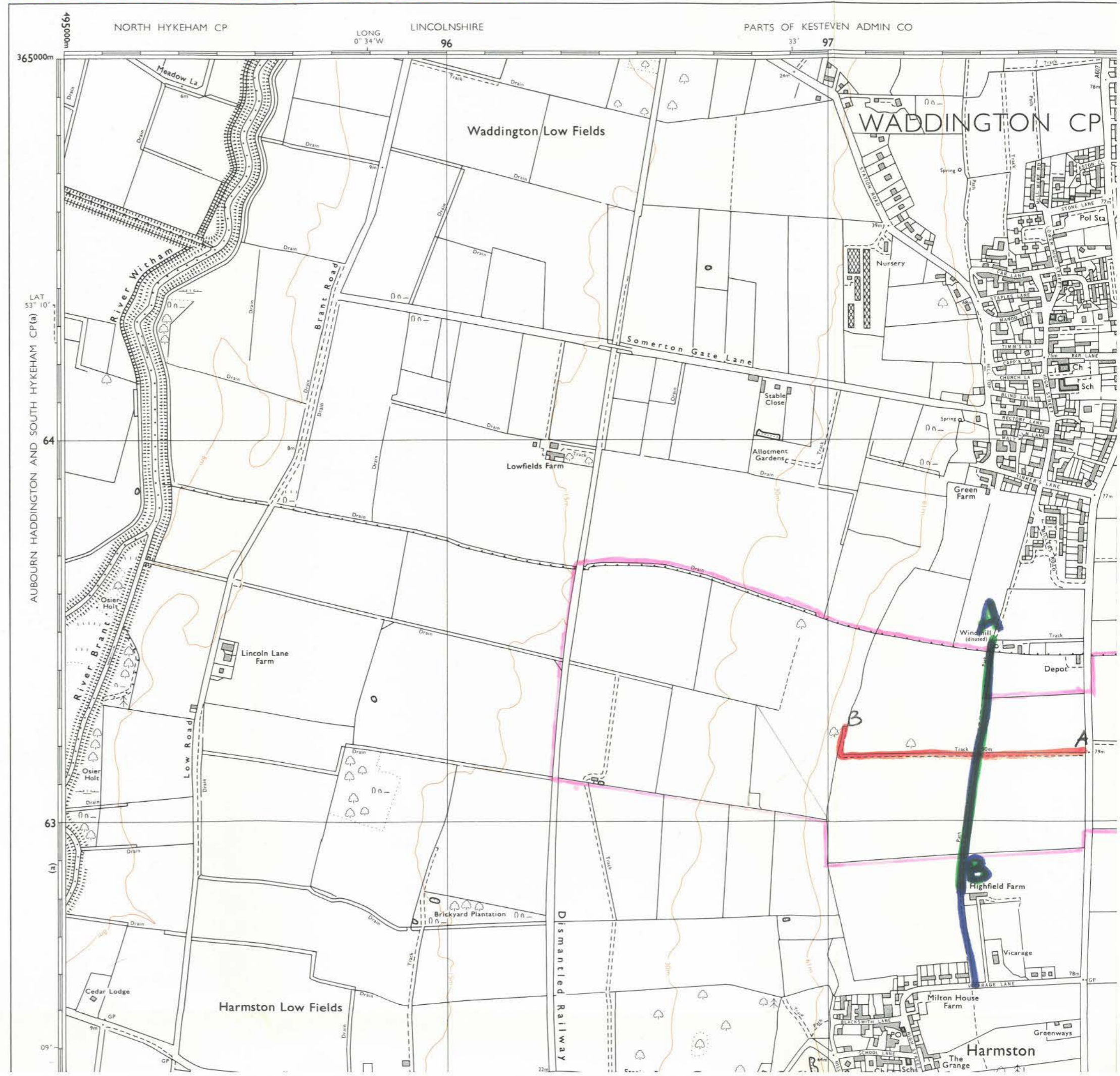
2000 Metres 6500 Feet

6000

5000

ABBREVIATIONS

BP,BS Boundary Post or Stone Pol Sta Police Station



CONTOUR NOTE
Contours have been surveyed in feet at a varying vertical interval but values are given to the nearest metre.



ABBREVIATIONS

- | | | | |
|---------|------------------------|---------|---------------------|
| BP,BS | Boundary Post or Stone | Pol Sta | Police Station |
| Ch | Church | PO | Post Office |
| CH | Club House | PC | Public Convenience |
| F E Sta | Fire Engine Station | PH | Public House |
| FB | Foot Bridge | SB | Signal Box |
| Fn | Fountain | Spr | Spring |
| GP | Guide Post | TCB | Telephone Call Box |
| MP | Mile Post | TCP | Telephone Call Post |
| MS | Mile Stone | W | Well |

THE NATIONAL GRID REFERENCE SYSTEM

TO GIVE A GRID REFERENCE CORRECT TO 100 METRES

EXAMPLE Ryedale The grid letters on this sheet are SK

EASTING
Take west edge of kilometre square in which point lies and read the large figures printed opposite this line on north and south margins. Estimate tenths eastwards

97
7
977

NORTHING
Take south edge of kilometre square in which point lies and read the large figures printed opposite this line on east and west margins. Estimate tenths northwards

61
5
615

Full 100 metre reference SK 977615

The full reference, above, is unique. If grid letters are omitted, the resulting reference 977615 recurs at intervals of 100 kilometres. When the area concerned is sufficiently restricted, as will usually be the case with maps on scales of one inch to one mile and larger, the grid letters are normally omitted.

At the eastern edge of this sheet True North is 1°12' West of Grid North and at the western edge 1°08' West of Grid North. Magnetic North was about 8½° West of Grid North in 1974 decreasing by about ½° in five years.

SURVEY DIAGRAM



ADJOINING SHEETS

SK 96 NW	SK 96 NE	TF 06 NW
SK 96 SW	SK 96 SE	TF 06 SW
SK 95 NW	SK 95 NE	TF 05 NW

Surveyed at 1:2500 scale 1965-70.
Revised for significant changes 1973.
Contours were not surveyed at these dates but were taken from the Six Inch County Series.
Boundaries revised to 1-3-74.

1 square centimetre on this map represents 1 hectare (2.471 acres) on the ground.
1 metre = 3.2808 feet
1 foot = 0.3048 metre

A booklet, *Place names on maps of Scotland and Wales*, is published by the Ordnance Survey, and includes a glossary of the most common Gaelic, Scandinavian and Welsh elements used on Ordnance Survey maps of Scotland and Wales.

The representation on this map of a road, track or path is no evidence of the existence of a right of way.

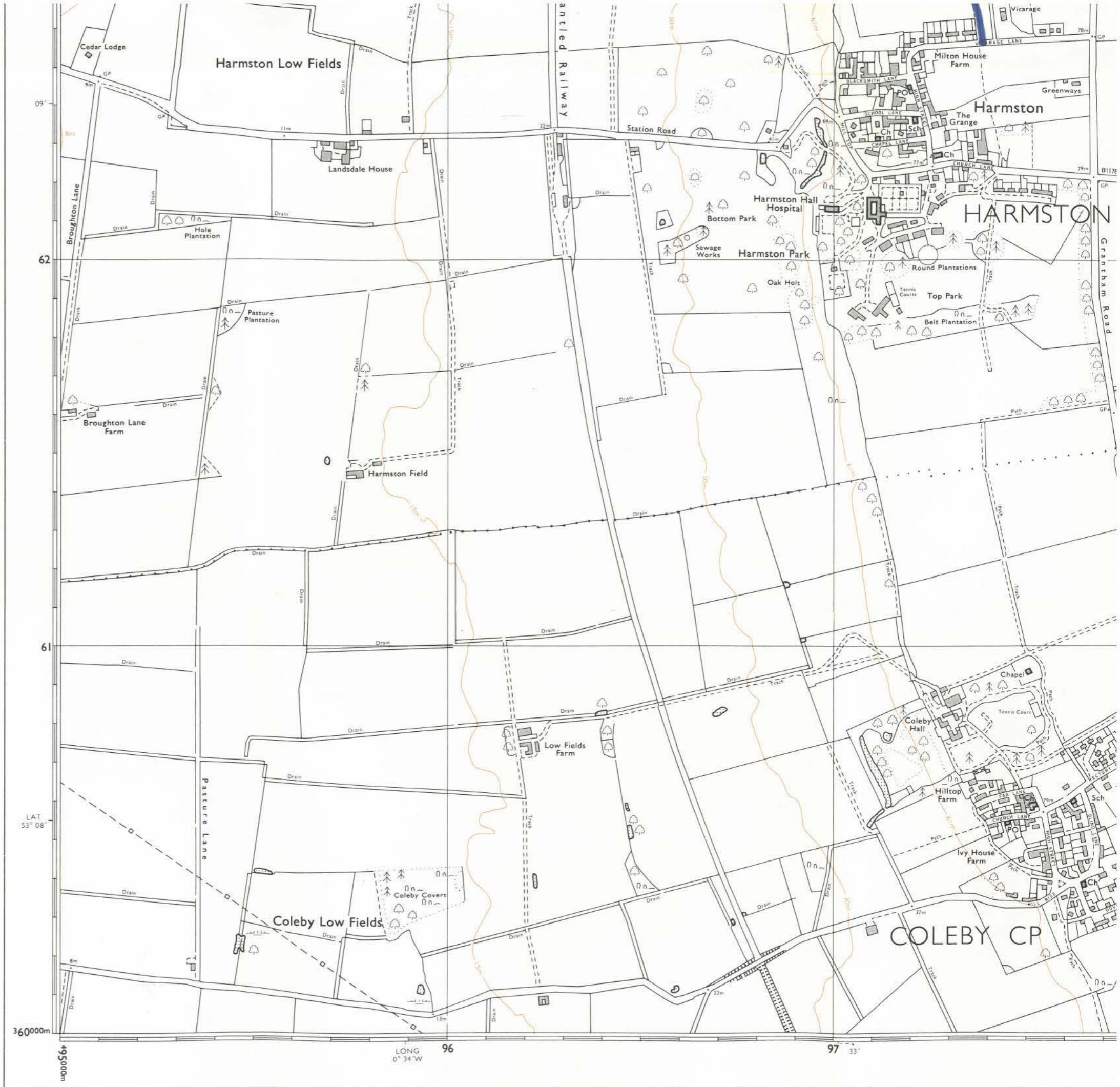
Made and published by the Director General of the Ordnance Survey, Southampton.

© Crown copyright 1974

A

LINCOLNSHIRE

SHEET SK 96 SE





09'
62
61
LAT 53° 08'
360000m
500000m
LONG 0° 31' W

BOOTHBY GRAFFOE CP

SK 96 SE